

PICTURE BUTTE AUCTION

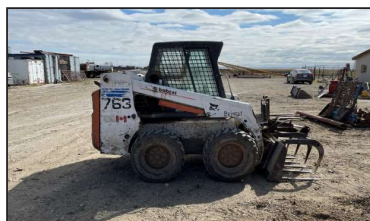
HENRY PROC FARM SALE (STIRLING, ALBERTA)

Directions: From Stirling, south on hiway 4, to twp rd 19-3 west. 3 km south to blue sign 62076

TRACTORS, TRUCKS,
FARM EQUIP., TOOLS

AUCTION

WEDNESDAY, MAY 19, 2021 - 10:30 A.M.



TRACTORS & SKIDSTEERS

- JD 4650 (1985), 12800 hrs, CHAR, c/w Leon front end loader, spale spear duals
- IH 1066 (1975), 6060 hrs, cab 540/1000 pto, c/w duals
- Ford 5000 (1969), 3 pth
- Bobcat 763 (1990), 5500 hrs, cw/ 66" tooth bucket, metal tracks, tire chains
- Ad Skidsteer attachments - 96" snow bucket, pallet fork, grapple fork, bale spear
- IH 806 tractor



TRUCKS & TRAILERS

- GMC 2500 HD, 2005 4x4, c/w 5th wheel hitch, 350 K (IGTHK29V15E10484)
- Oasis 20' gooseneck trailer (2007), tandem axle, c/w 24" side racks
- Southland 20' gooseneck stock trailer (1986), tandem axle, 2 compartments
- Super B hay trailer, 53", NO VIN
- Hay trailer, 20', fifth wheel, NO VIN
- Older wagon



FARMING EQUIPMENT

- JD 9350 Hoeddrill 40" c/w transport, vibrashank attachment
- Case 14" double disk, c/w harrows
- Ford 19" cultivator, c/w harrows
- Allied 40" diamond harrows & draw bar
- Vermeer 605 round baler
- NH 495 haybine
- NH 116 haybine
- Westward 3 pth 2 wheel double rake
- HP 3 pth/drawbar 5 wheel double rake
- Mayrath 10"x60" pto auger

IRRIGATION EQUIPMENT

- 1/2 mile 6" mainline
- 4x 5x5 wheeline 1/4 mile rainway, oliver
- 2x Ford Dorset 192 diesel pumping unit, c/w Berkley pump 6" in, 6" out
- 4" end gun on wheels
- Pipe wagon
- Mankota 3 cyl, c/w smaller pump



LIVESTOCK EQUIPMENT

- NH 357 grindermixer, c/w feed auger, hay feeder, screens
- 7 assorted round bale feeders
- 2x Butler hopper bottom bins
- 3x manual cattle squeeze
- large quantity of steel freestanding panels, 14', 16', 30'
- large quantity of steel gates & panels
- sheep scale
- quantity of page wire, barb wire
- misc vet supplies, dehorners
- homemade trailer w/manure spreader
- approx 75x 3x4 straw bales (rye)
- electric fencing unit - poles, wire, cart, fences

MISCELLANEOUS

- Toro Diesel Groundmaster 72 - 72" mower deck
- 2x powerfist water pump - 3"x3"
- Fibreglass 1500 gallon



- water tank
- 3x 250 gallon water tank
- pressure washer
- 110V propane pump
- bird cannon
- 3 pth King cutter rotary mowers - 5'
- Cart w 2 metal shears

BUILDINGS, METAL

- Steel 45" storage shed c/w lights, shelves
- metal clad 16" utility shed
- large rack of cables & chain
- rack with new iron
- rack with various length metal

SHOP SUPPLIES, GENERATOR

- quantity I Beam
- quantity pipe, 6" pipe
- Lincoln stick welder
- steel band saw
- various work benches
- wood jointer
- quantity of shop tools & supplies
- natural gas 15 kw generator, c/w panel box
- 4x slip tanks
- Westeel 500 gallon fuel tank



DISCLAIMER:

This is merely a guide and in no way a warranty or guarantee as to condition or age and is subject to deletions or additions, including errors or minor changes as you may find them the day of sale. PAYMENT TO BE MADE IN FULL ON SALE DAY. All "COVID-19" Government regulations apply.

ONLINE BIDDING WILL BE AVAILABLE THROUGH [DLMS.CA](https://dlms.ca)

Go to picturebutteauction.ca to get updated info on all of our sales!

Ph. 403/732-4400 • Fax 403/732-4405

Owner/Auctioneer: Brad deLeeuw | Auctioneer: Erik Dunsbergen | Office: Jennifer Schultz

